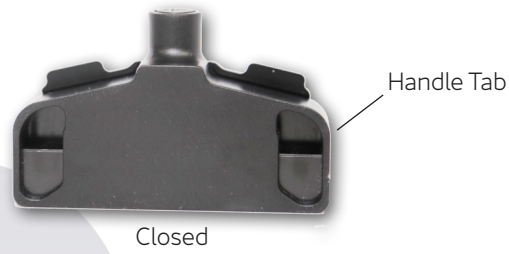


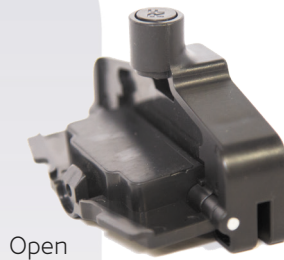


INSTRUCTION SHEET

Clip Tag



Closed



Open



Mouth of tag

APPLICATION:



1. While tag is in open position, slide Mouth of tag onto the zippered area of packaging.



2. Once tag is properly seated, press firmly on Handle Tab to lock.



3. Merchandise is now secure & ready to be displayed.

REMOVAL:



1. Place clutch section of tag onto the key.



2. Press firmly on Handle Tab and pull back to release tag.

SUGGESTED DETACHER:

S3 Super Key

Detaching



Caution: Do not place credit cards, ATM cards or magnetic media of any kind near the Super S3 Key or Multi-Detacher, as this could erase the magnetic strip.

SAP # 10155148